

Instructions for Use

NGENLA[®]

(somatrogon)

60 mg

Injection for subcutaneous (under the skin) use only

Keep this leaflet. These instructions show step-by-step directions on how to prepare and give an injection.

Important information about your NGENLA pen

- NGENLA for injection is a single-patient use, disposable (throw away) prefilled pen containing 60 mg of medicine. You can give more than 1 dose from the pen.
- NGENLA for injection can be given by a patient, caregiver or healthcare provider. **Do not** try to inject NGENLA yourself until you are shown the right way to give the injections and read and understand the Instructions for Use. If your healthcare provider decides that you or a caregiver may be able to give your injections of NGENLA at home, you should receive training on the right way to prepare and inject NGENLA. It is important that you read, understand, and follow these instructions so that you inject NGENLA the right way.
- It is important to talk to your healthcare provider to be sure you understand your NGENLA dosing instructions. To help you remember when to inject NGENLA you can mark your calendar ahead of time. Call your healthcare provider if you or your caregiver have any questions about the right way to inject NGENLA, or call Pfizer Australia at 1800-675-229.
- **Do not** share your pen with other people, even if the needle has been changed. You may give other people a serious infection, or get a serious infection from them.
- Each turn (click) of the dose knob dials 0.5 mg of medicine. You can give from 0.5 mg to 30 mg in a single injection. If your dose is more than 30 mg, you will need to give more than 1 injection.
- A new pen may contain slightly more than 60 mg of medicine, this is normal.
- Always use a new sterile needle for each injection. This will reduce the risk of contamination, infection, leakage of medicine, and blocked needles leading to the wrong dose.
- **Do not** shake your pen. Shaking can damage the medicine.
- The pen is **not recommended** for use by the blind or visually impaired without the assistance of a person trained in the proper use of the product.

Supplies you will need each time you inject

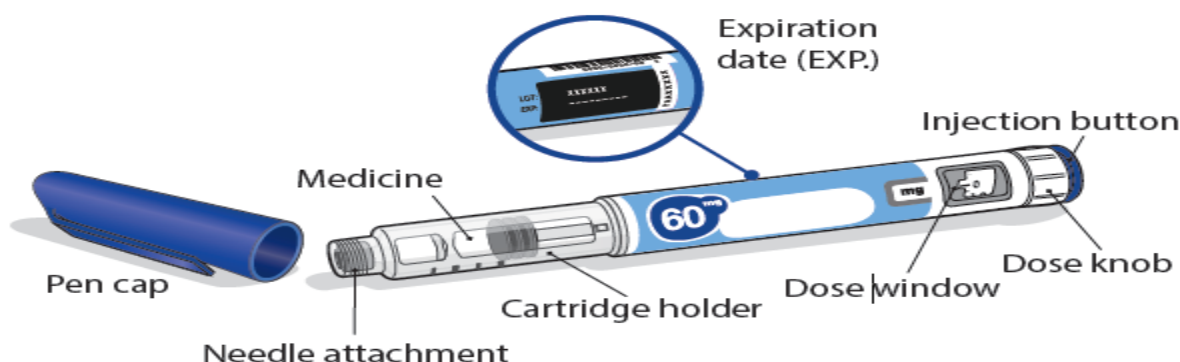
Included in the carton:

- 1 NGENLA prefilled pen.

Not included in the carton:

- 1 new sterile needle for each injection.
- Alcohol swabs.
- Cotton balls or gauze pads.
- Adhesive bandage.
- A sharps disposal container for disposal of pen needles and pens (See How should I dispose of the pen needles and pens?).

60 mg NGENLA pen:

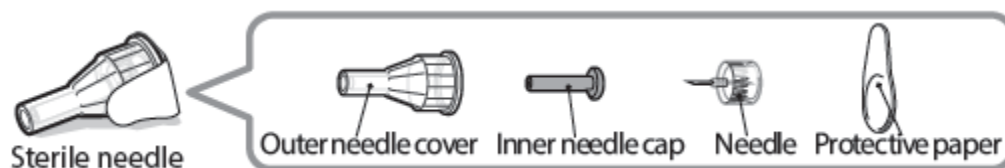


Needles to use

Pen needles are **not included** with your NGENLA pen.

- Needles to use with your NGENLA pen:
 - 32G (Novo Nordisk®, NovoFine® Plus)
 - 31G (Novo Nordisk®, NovoFine®)
 - 31G (Becton Dickinson and Company, BD Ultra-Fine™ or BD Micro-Fine™)
- Talk with your healthcare provider about the right needle for you.

Sterile needle (example) not supplied:



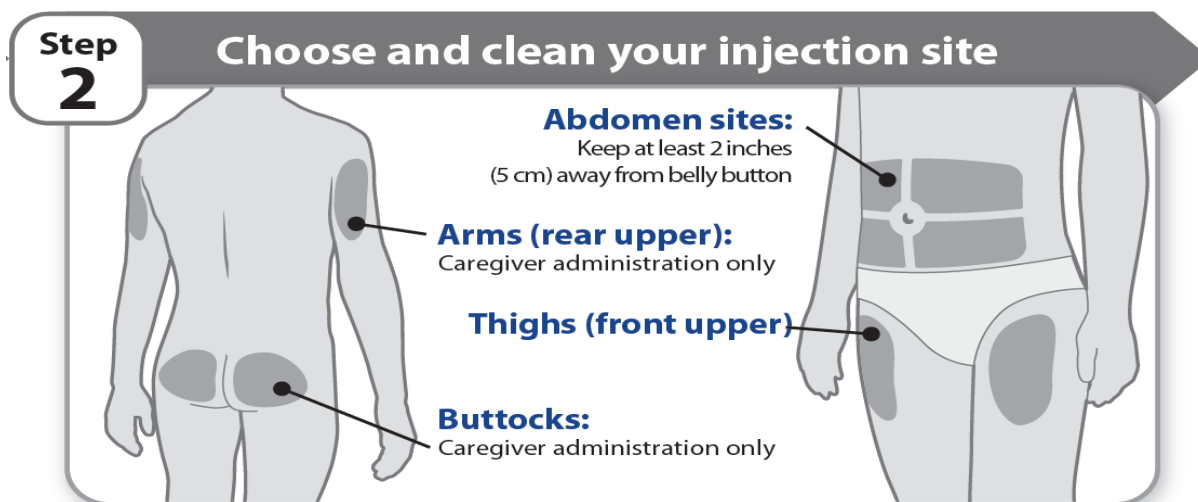
Caution: Never use a bent or damaged needle. Always handle pen needles with care to make sure you do not prick yourself (or anyone else) with the needle. **Do not** attach a new needle to your pen until you are ready to take your injection.

Preparing for your injection

Step 1 - Getting ready

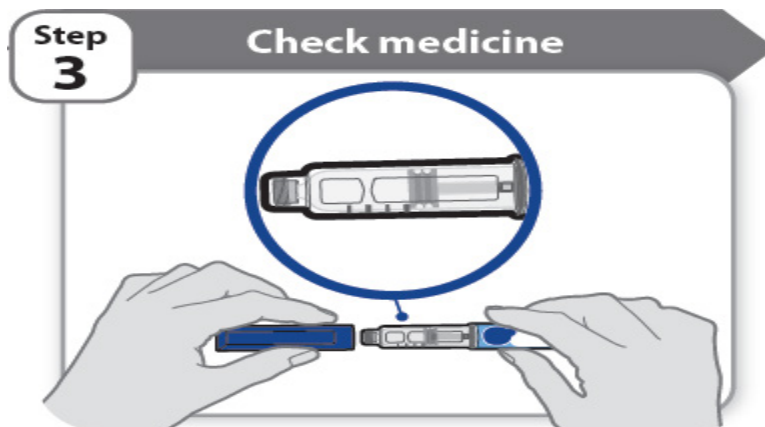
- Wash and dry your hands.
- You can use your pen straight from the refrigerator. For a more comfortable injection, leave your pen at room temperature for up to 30 minutes.
- Check the name, strength, and label of your pen to make sure it is the medicine your healthcare provider has prescribed for you.
- Check the expiration date on the pen label. **Do not** use if the expiration date has passed.
- **Do not** use your pen if:
 - it has been frozen or exposed to heat.
 - it has been dropped.
 - it looks broken or damaged.
 - it has been more than 28 days after first use of the pen.
 - the same pen has been used 5 times.
 - the pen has been exposed to temperature higher than 32°C for more than 2 hours with each use.
- **Do not** remove the pen cap from your pen - until you are ready to inject.

Step 2 - Choose and clean your injection site



- NGENLA can be given in the abdomen, thighs, buttocks, or upper arms.
- Choose the best place to inject, as recommended by your healthcare provider.
- If more than 1 injection is needed to complete your full dose, each injection should be given in a different injection site.
- **Do not** inject into bony areas, areas that are bruised, red, sore or hard, and areas that have scars or skin conditions.
- Clean the injection site with an alcohol swab.
- Allow the injection site to dry.
- **Do not** touch injection site after cleaning.

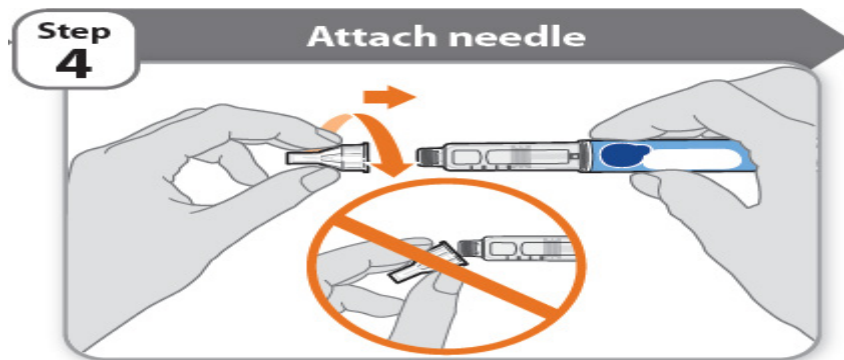
Step 3 - Check medicine



- Pull off the pen cap and keep it for after your injection.
- Check the medicine inside the cartridge holder.
- Make sure the medicine is colorless to slightly light yellow. **Do not** inject the medicine if it is cloudy or dark yellow.

- Make sure the medicine is free of flakes or particles. **Do not** inject the medicine if it has flakes or particles.
Note: It is normal to see one or more bubbles in the medicine.

Step 4 - Attach needle



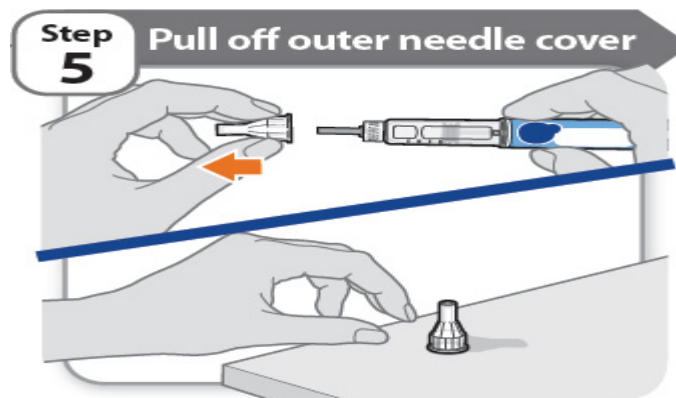
- Take a new needle and pull off the protective paper.
- Line the needle up with your pen keeping them both straight.
- Gently push and then screw the needle onto your pen.

Do not over tighten.

Note: Be careful not to attach the needle at an angle. This may cause the pen to leak.

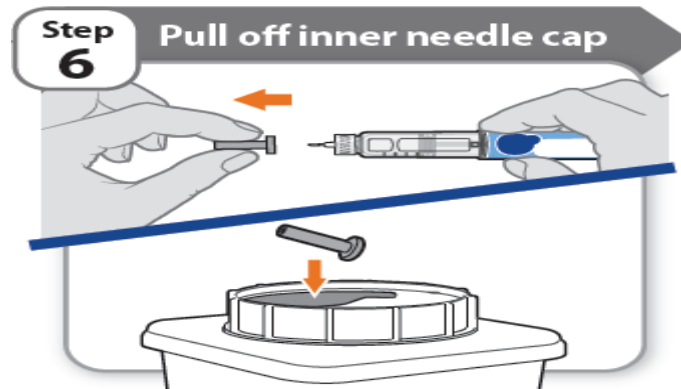
Caution: Needles have sharp tips at both ends. Handle with care to make sure you do not prick yourself (or anyone else) with the needle.

Step 5 - Pull off outer needle cover



- Pull off the outer needle cover.
- Make sure you keep the outer needle cover. You will need it later to remove the needle.
Note: You should see an inner needle cap after you have removed the outer cover. If you do not see this, try to attach the needle again.

Step 6 - Pull off inner needle cap



- Pull off the inner needle cap carefully to show the needle.
- Throw away the inner needle cap in a sharps container. It is not needed again.

Is this pen new?

Yes: Go to New pen set up

No: Go to Step 7.

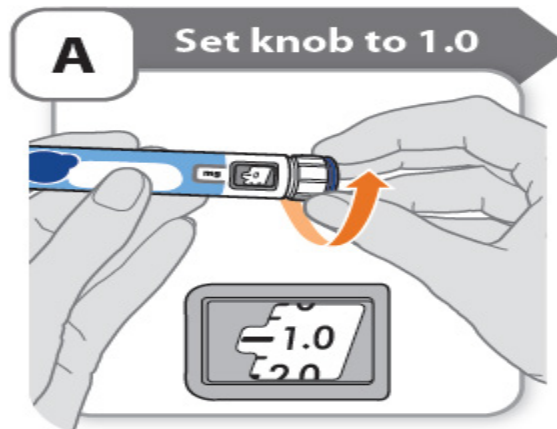
New pen set up (priming) – for the first use of a new pen only

You must set up each new pen (priming) before using it for the first time

- New pen set up is done before each new pen is used for the first time.
- The purpose of setting up a new pen is to remove air bubbles and make sure you get the correct dose.

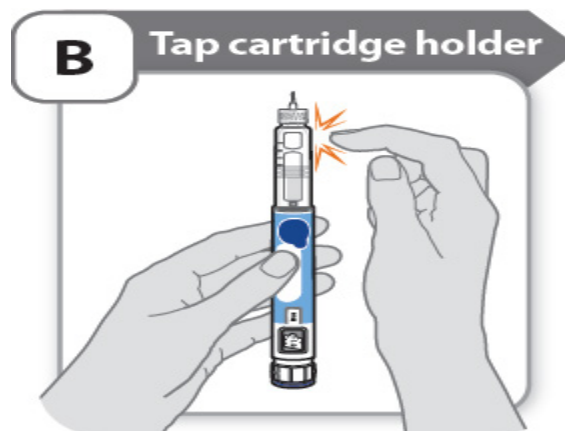
Important: Skip Step-A through to Step-C if you have already set up your pen.

A - Set knob to 1.0



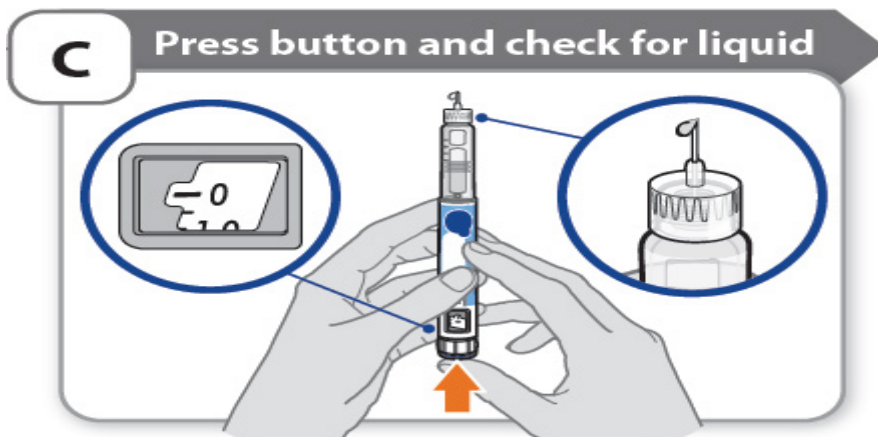
- Turn the dose knob to **1.0**.
Note: If you turn the dose knob too far, you can turn it back.

B - Tap cartridge holder



- Hold the pen with the needle pointing up so that the air bubbles can rise.
- **Tap** the cartridge holder gently to float any air bubbles to the top.
Important: Follow Step-B even if you do not see air bubbles.

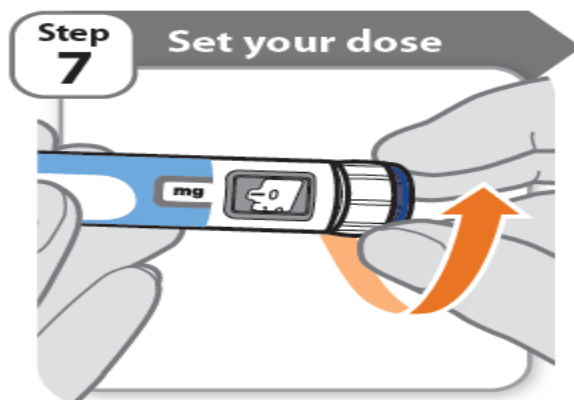
C - Press button and check for liquid



- **Press the injection button** until it cannot go any further and “0” is shown in the dose window.
- **Check** for liquid at the needle tip. If liquid appears, your pen is set up.
- Always make sure that a drop of liquid appears before you inject. If liquid has not appeared, repeat Step-A through to Step-C.
 - If liquid does not appear after you have repeated Step-A through Step-C five (5) times, attach a new needle and try 1 more time. **Do not** use the pen if a drop of liquid still does not appear. Contact your healthcare provider or pharmacist, and use a new pen.

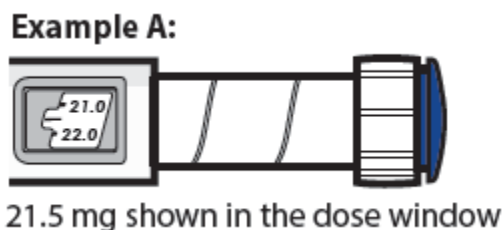
Setting your prescribed dose

Step 7 - Set your dose

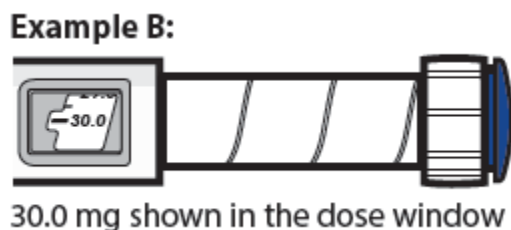


Example A:

21.5 mg shown in the dose window

**Example B:**

30.0 mg shown in the dose window



- Turn the dose knob to set your dose.
 - The dose can be increased or decreased by turning the dose knob in either direction.
 - The dose knob turns 0.5 mg at a time.
 - Your pen contains 60 mg of medicine but you can only set a dose of up to 30 mg for a single injection.
 - The dose window shows the dose in mg. See **Examples A and B**.
- **Always check the dose window to make sure you have set the correct dose.**
Important: Do not press the injection button while setting your dose.

What should I do if I cannot set the dose I need?

- If your dose is more than 30 mg you will need more than 1 injection.
- You can give from 0.5 mg to 30 mg in a single injection.
 - If you need help dividing up your dose the right way, ask your Healthcare provider.
 - Use a new needle for each injection (See **Step 4: Attach needle**).
 - If you normally need to give 2 injections for your full dose, be sure to give your second dose.

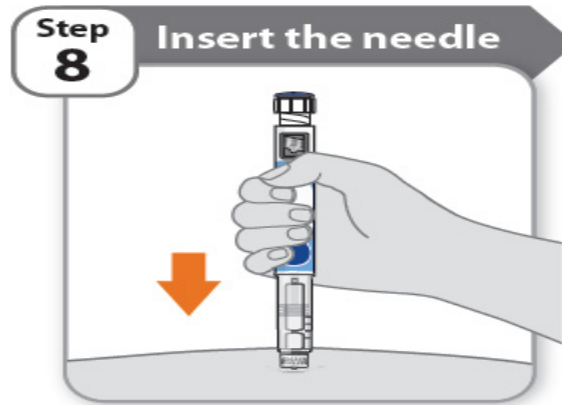
What should I do if I do not have enough medicine left in my pen?

- If your pen contains less than 30 mg of medicine, the dose knob will stop with the remaining amount of medicine shown in the dose window.
- If there is not enough medicine left in your pen for your full dose, you may either:

- inject the amount left in your pen, then prepare a new pen to complete your dose in full. Remember to subtract the dose you have already received. For example, if the dose is 21.5 mg and you can only set the dose knob to 17 mg, you should inject another 4.5 mg with a new pen.
- Or get a new pen and inject the full dose.

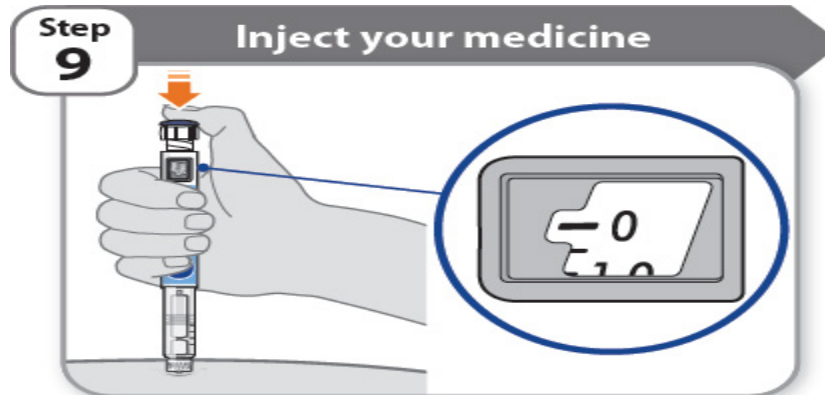
Injecting your dose

Step 8 - Insert the needle



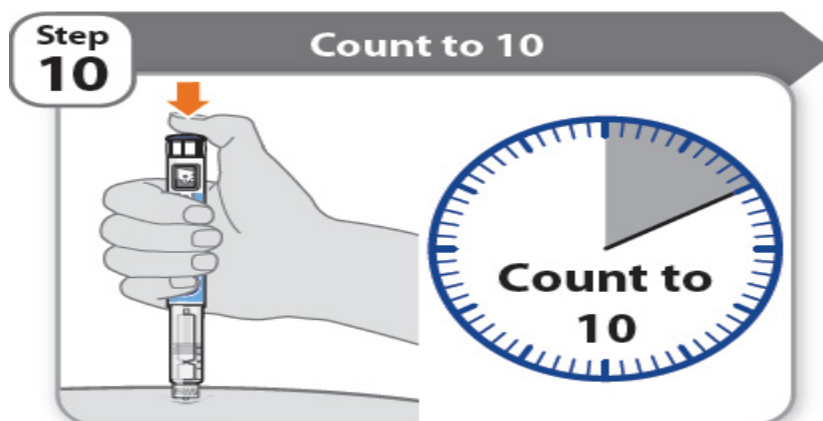
- Hold your pen so you can see the numbers in the dose window.
- Insert the needle straight into your skin.

Step 9 - Inject your medicine



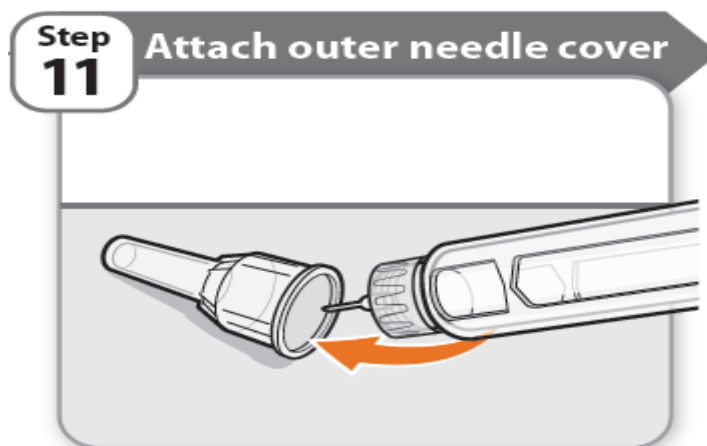
- Keep holding the needle in the same position in your skin.
- **Press the injection button** until it cannot go any further and “0” is shown in the dose window.

Step 10 - Count to 10



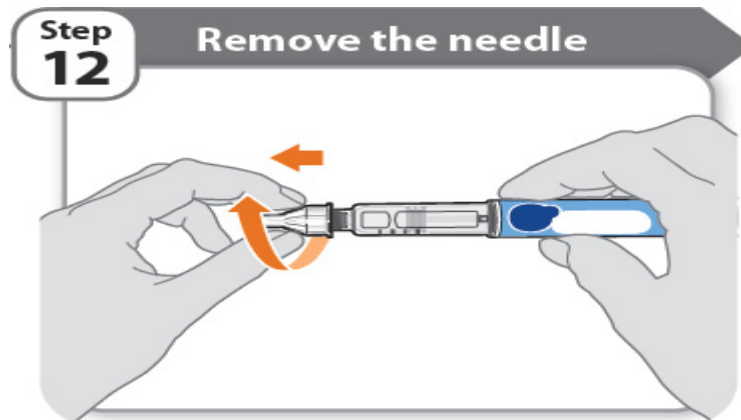
- **Continue to press the injection button while counting to 10.** Counting to 10 will allow the full dose of medicine to be given.
- After counting to 10, let go of the injection button and slowly remove the pen from the injection site by pulling the needle **straight out**.
Note: You may see a drop of medicine at the needle tip. This is normal and does not affect the dose you just received.

Step 11 - Attach outer needle cover



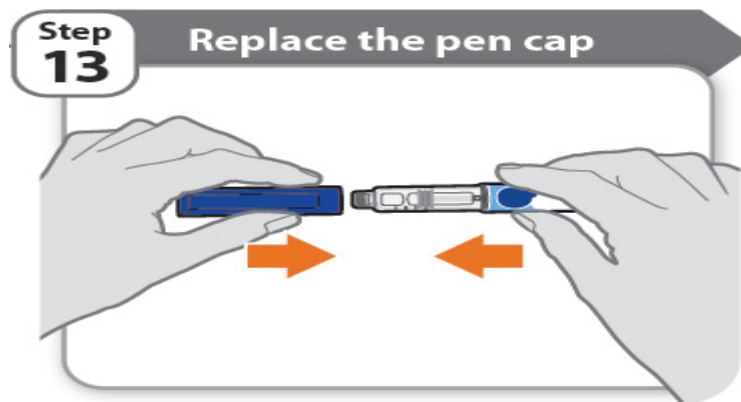
- Carefully place the outer needle cover back on the needle.
- Press on the outer needle cover until it is secure.
Caution: Never try to put the inner needle cap back on the needle. You may prick yourself with the needle.

Step 12 - Remove the needle



- Unscrew the capped needle from the pen.
- Gently pull until the capped needle comes off.
Note: If the needle is still on, replace the outer needle cover and try again. Be sure to apply pressure when unscrewing the needle.
- Throw away the needle in the sharps container (See How do I dispose of the pen needles and pens?). **Important:** Always remove and throw away used needles. **Do not** reuse needles.

Step 13 - Replace the pen cap



- Replace the pen cap back onto your pen.
- **Do not** recap the pen with a needle attached.
- If there is any medicine left in your pen, store in the refrigerator between uses (See **How should I store my pen?**).

Step 14 - After your injection

- Press lightly on the injection site with a clean cotton ball or gauze pad, and hold for a few seconds.
- **Do not** rub the injection site. You may have slight bleeding. This is normal.

- You may cover the injection site with a small adhesive bandage, if needed.
- If your pen is empty or it has been **more than 28 days** after first use, or if the same pen has been **used 5 times**, throw it away even if it contains unused medicine. Refer to “**Storage and disposal**” on the right side of this leaflet.

Storage and disposal:

How should I store my pen?

- Keep NGENLA, injection supplies, and all medicines out of the reach of children.

Before first use (unused pens):

- Store your pens in the refrigerator between 2°C to 8°C.
- **Do not** freeze your pen or expose it to heat.
- Unused pens may be used until the expiration date printed on the label, only if the pen has been kept in the refrigerator.

After first use (in-use pens):

- Store your pen in the refrigerator at 2°C to 8°C and away from direct sunlight.
- Keep the pen cap on your pen when it is not in use.
- **Do not** store the pen with a needle attached.
- If your pen is empty or it has been **more than 28 days** after first use or if it has been **used 5 times**, throw it away even if it contains unused medicine.
- To help you remember when to dispose of your pen you can write the date of first use on the pen label and below:

Date of first use _____ / _____ / _____

- When travelling, transport your pen in its original carton in an insulated container with an ice pack. To avoid freezing, make sure your pen does not touch the ice pack. Once you arrive, your pen should be placed in a refrigerator as soon as possible. **Do not** leave it in a car or other place where it can get too hot or too cold.

How should I dispose of the pen needles and pens?

- Throw away your pen, and pen needles into a sharps disposal container or puncture resistant container.
- If you do not have a sharps disposal container, you may use a household container that:
 - is made of heavy-duty plastic
 - can be closed with a tight-fitting, puncture resistant lid, without sharps being able to come out
 - is upright and stable during use
 - is leak-resistant, and properly labeled to warn of hazardous waste inside the container.
- When your sharps disposal container is almost full, you will need to follow your community guidelines for the right way to dispose of your sharps disposal container.

There may be local laws about how you should throw away used needles, syringes, and prefilled syringes. Ask your doctor or nurse, if you are not sure what to do.

- **Do not** throw away your used sharps disposal container in your household trash unless your community guidelines permit this.
- Keep the sharps container out of the reach of children.

